



Starnet Access Flooring

Low-Profile Wire Management System

PowerTra^{XX}
BOMERIS



Easy to install, completely adaptable, low-profile wire management flooring system for new construction and renovation to existing office buildings

TV News Station
Columbus, OH
5,283 sq. ft. - 2017

Starnet low-profile flooring unequaled adaptability and access

ASM Modular Systems, Inc. is one of the largest access floor companies in North America, specializing in the data center and office market. As a wholly owned subsidiary of the [Kingspan Group](#), ASM offers distribution and installation capabilities around the globe. Renown for experience, quality and engineering, ASM has become the product of choice for many data center providers and office spaces alike.

We are therefore proud to present our **new** offering which addresses cable management and accessibility needs for clients with restrictive floor to ceiling heights. Starnet **PowerTraXX** - as low as 1 1/2", easy to install, fully modular electrical system. The solution is Starnet **PowerTraXX**.



PowerTraXX
BOMERIS



Where can Starnet Low-Profile System be used?

Manufacturing & Assembly Areas
911 CALL CENTERS
K-12 Schools
Casino
LIBRARIES
APPLICATIONS ARE LIMITLESS
STORAGE FACILITIES
Training Facilities
Retail & Wholesale Stores
Displays/Exhibits
Conference Rooms
Class A Office Buildings
Universities
Courtrooms



The ASM Starnet floor has the best “walk-ability” in its class. Its strength and flexibility provides a quiet and solid feel underfoot.

Super quiet!



Complete flexibility, prefabricated, high strength and no adhesives or fasteners



PERFORMANCE DATA

- Concentrated Live Load - 2,000 lbf (8.90 kN)
Per IBC Table 1607.1
- Concentrated Point Load - 500 lbf (2.22 kN)
- Uniform Live Load - 2,000 lbf (8.90 kN)
- Ultimate Load Safety Factor - 2-to-1 Min.
- Rolling Loads - 10 Pass
CISCA Wheel A (3" dia.) - 460 lb.
8" dia. x 2" Semi-Pneumatic - 500 lb.

PHYSICAL DATA

- Weight of system 3.7 psf (18.1 kg/m²)
- Height of system - 1 1/2" (40 mm)
2" (50 mm)
- Fire rating of bare panel:
Class A Flame Spread
Non-Combustible Materials

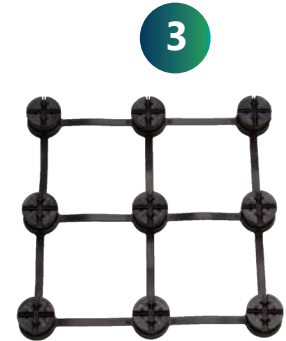
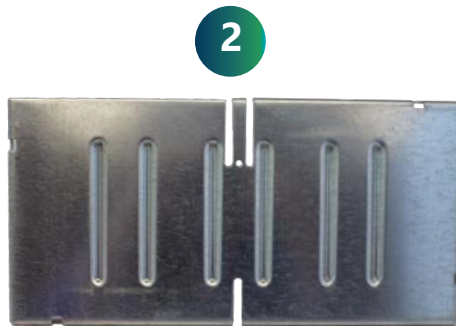
FEATURES

- Available at 1.5" FFH of 2" FFH
- Prefabricated before shipment
- Easy to install
- Heavy Duty quick-connect steel plates
- Easy to change layout and cable wiring
- No adhesive required
- No underlayment required
- No fasteners required

Starnet is composed of a:

- Rectangular plate
- Square plate
- Resin base for 1.5" or 2" FFH
(40mm & 50mm)

Easy as



Available in 1.5" & 2" FFH

Introducing...

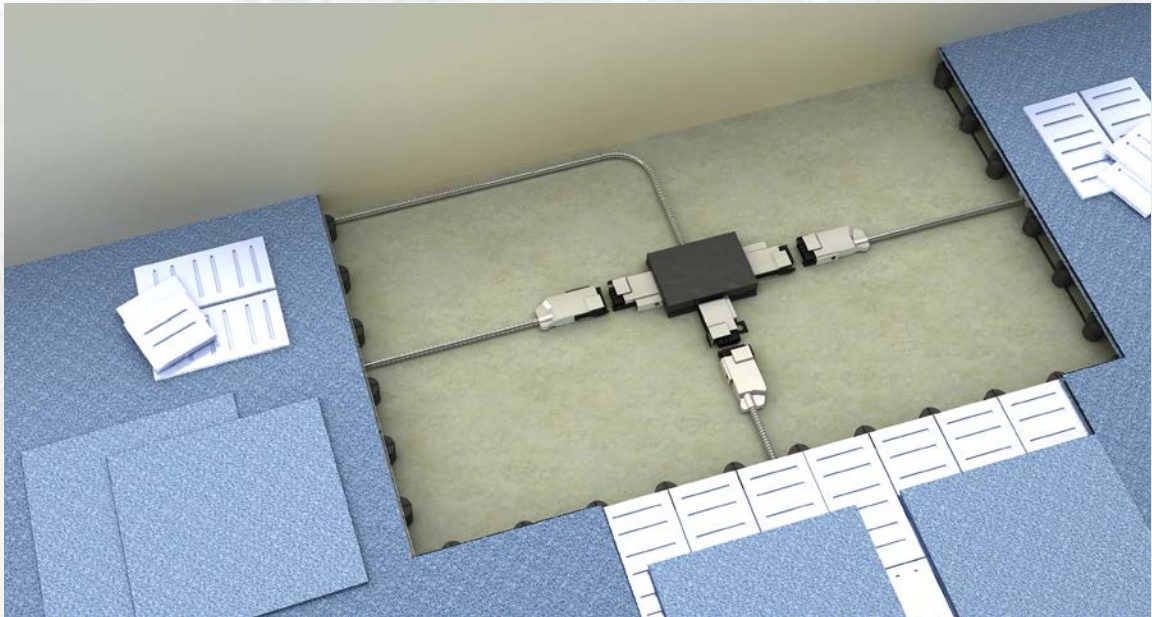
PowerTra™

EmPOWERing your business



Homerun Cable to Electrical Panel - (3 circuits each)

Flexibility

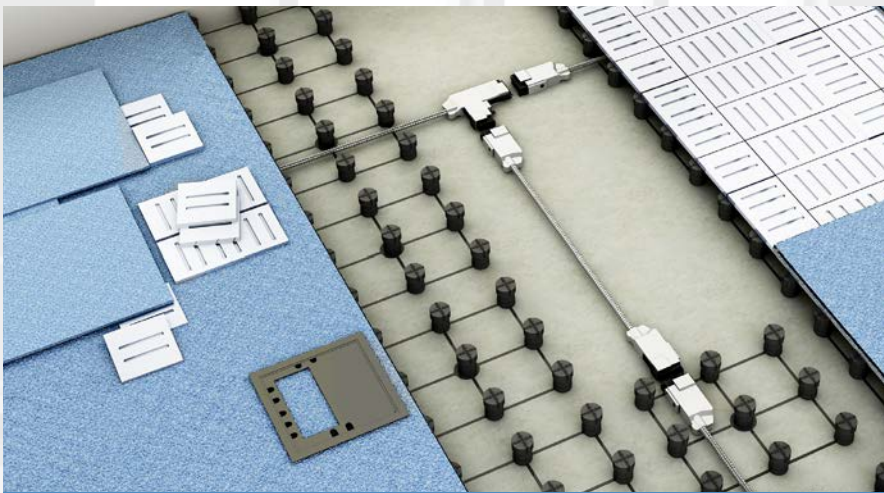


3 - Port Distribution Box

Plug - N - Play



Power to Systems Furniture



Single & Double Headed Extender Cable

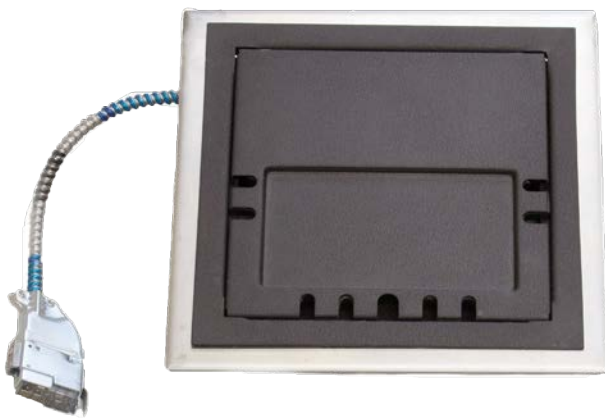
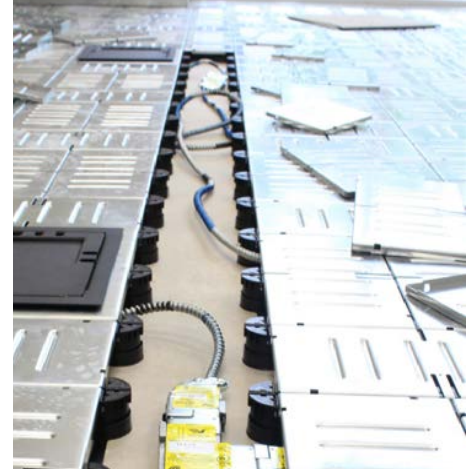
Wire Management



Power to Slot Banks

A fully flexible wire management system

ASM's Starnet **PowerTraXX** plug-and-play modular electrical system is specifically designed for low height floors. **PowerTraXX** connects the service boxes in the general office layout to the electrical panel via a 3 port distribution box and extender cables. The extender cables have been engineered to be plugged and unplugged while "hot", allowing fast reconfiguration or modification to your floor plan. This provides the flexibility you need and the peace of mind that any future additions will be simple, non-disruptive and inexpensive.



Flush mounted power, voice & data boxes

PHYSICAL DATA

- Overall dimension - 11 ½ x 11 ½"
- Floor opening - 10" x 10"
- Height of box - Fits into ASM 1 ½" FFH Low-Profile Floor System
- Load rating of lid - 1,000 lbf (4448 N)

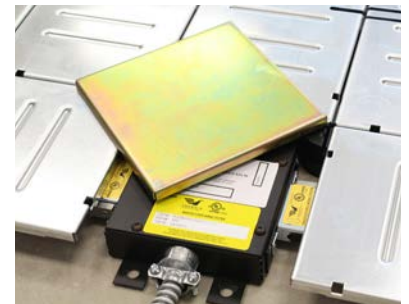
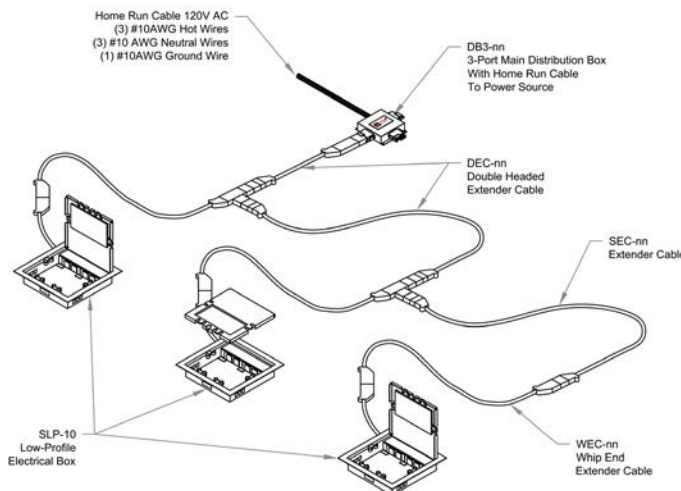
ELECTRICAL DATA

- 20amp/120V AC
- Extended cables provided in 5' increments
- Four simplex receptacles provided
- 3 wire 12 Ga extender cables
- 7 wire 10 Ga homerun cable
- Standard with 12" long Whip End Extender Cable

FEATURES

- Standard with four 20A simplex receptacles
- Lid hinges open or lifts off
- Recessed lid to accept carpet/tile insert
- Powder coat epoxy paint finish
- Welded heavy gauge steel construction
- 6 openings for Keystone jack couplers
- Lid can be closed when in use

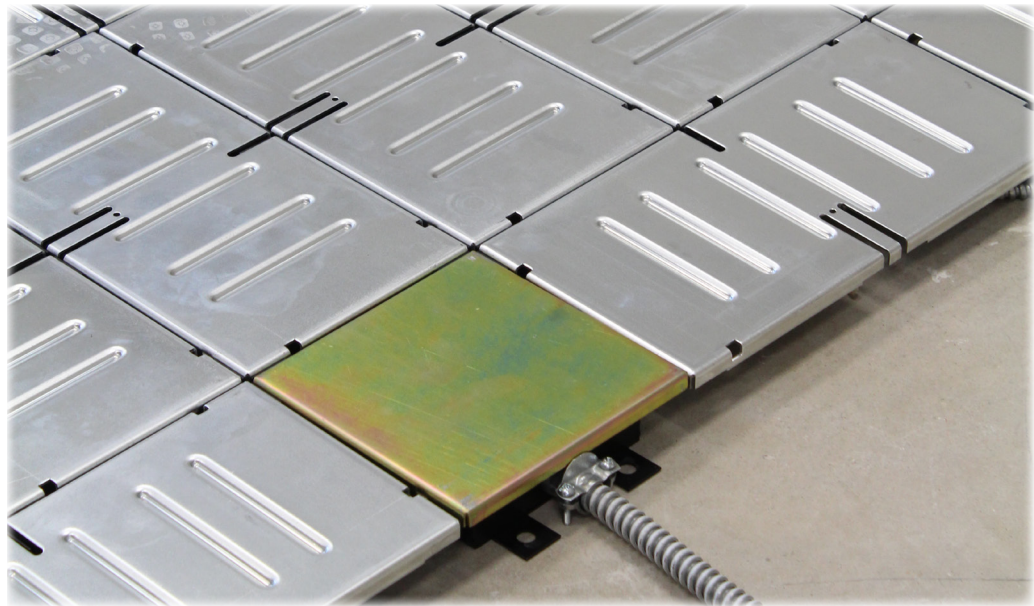
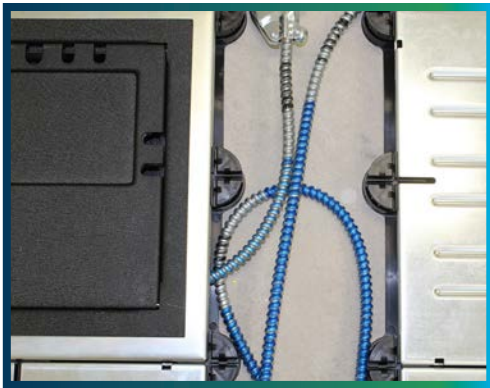
POWERS UP TO 9 BOXES



Distribution box cover for easy identification



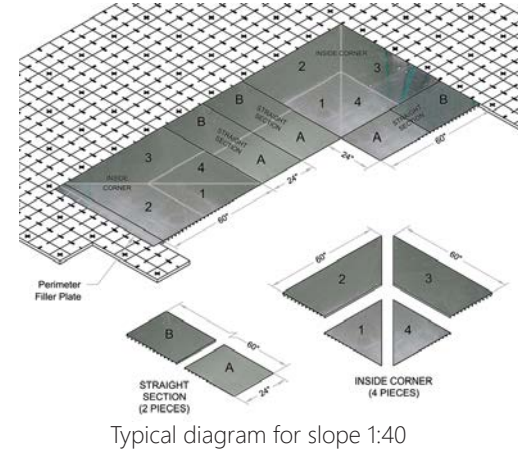
Easy access power/
voice & data box



Smooth transition



Ramps, Threshold & Perimeter Plates

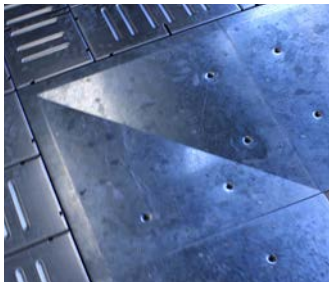


Ramp components for 1:12, 1:20, or 1:40

- . Straight
- . Inside corner
- . Outside corner

Smooth and structurally sound transitions

SLP-40/50
Low-Profile System
Inside Corner &
Outside Corner



SLP-40/50
Low-Profile System
Straight Ramp



Extruded Aluminum
Threshold/Fascia with
Rubber Strip for
doorways and open
perimeters



Galvanized Steel
Filler Plate to
be Cut-to-Fit at
Perimeter Walls



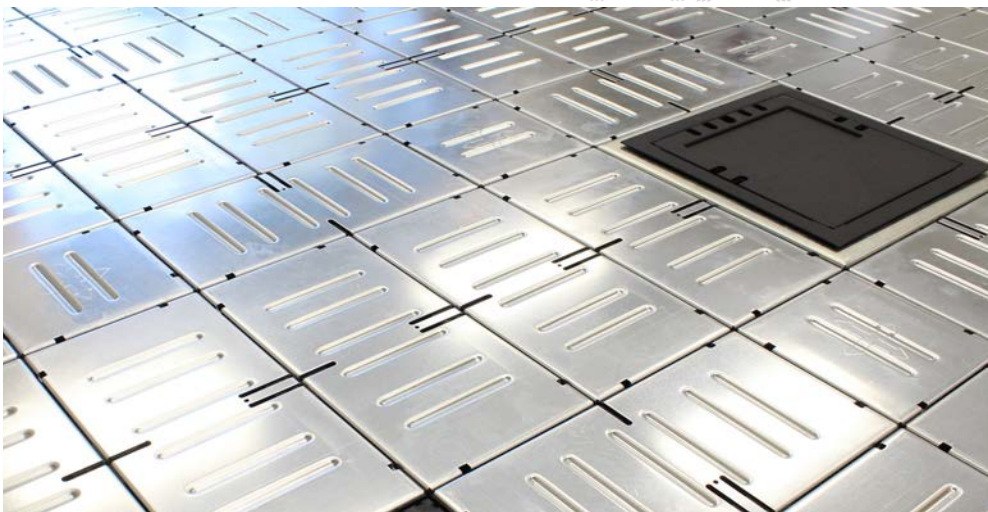
Installation



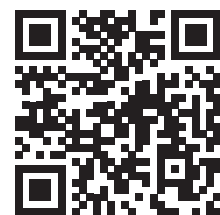
Easy to install
No adhesives, underlayment,
or fasteners required



PowerTra  



Go to www.starnetaccessfloor.com
to view our installation video or
scan the QR code below.



Contact one of our Starnet **PowerTraXX** specialists:

Ph: 843-534-1110

Fax: 843-534-1111

Email: info@asmproducts.com

Websites: www.starnetaccessfloor.com

www.asmproducts.com

Location:

9500 Industrial Center Drive

Ladson, SC 29456



ASM
innovations in access flooring

PowerTra TM
BOMERIS